

Community Mapping

**Creating the Evidence Base
Citizen Science & Participatory Mapping**

DR BARBARA BRAYHAY

Community Mapping

- Introduction
 - Citizen science
 - Crowdsourcing
 - Citizen social science
- Livable Streets Case Study
- Conclusion

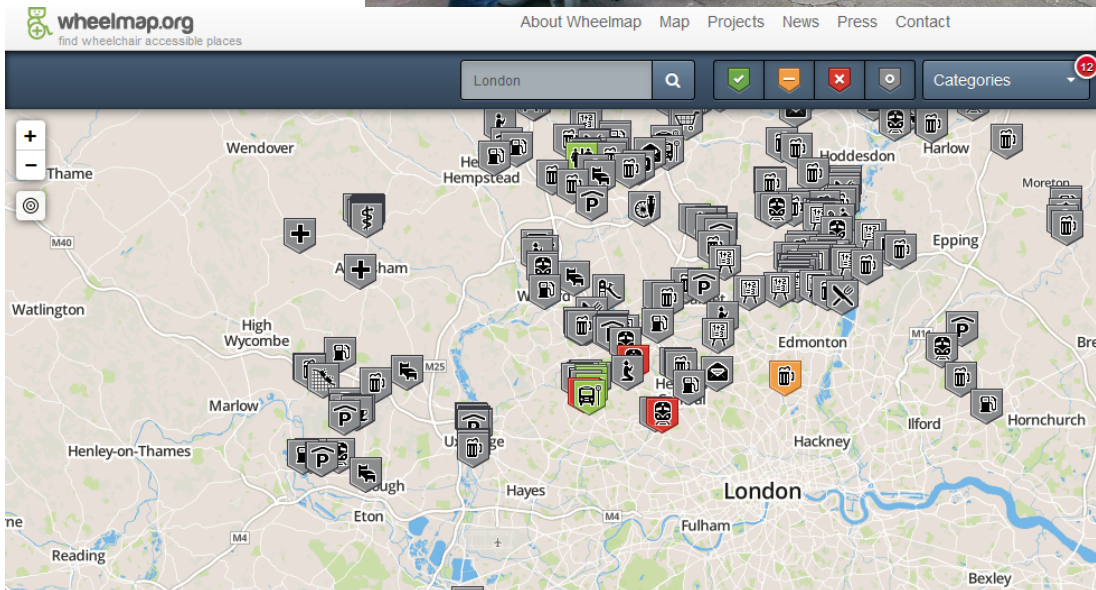
Why Mapping?

How can maps be used to lever change?

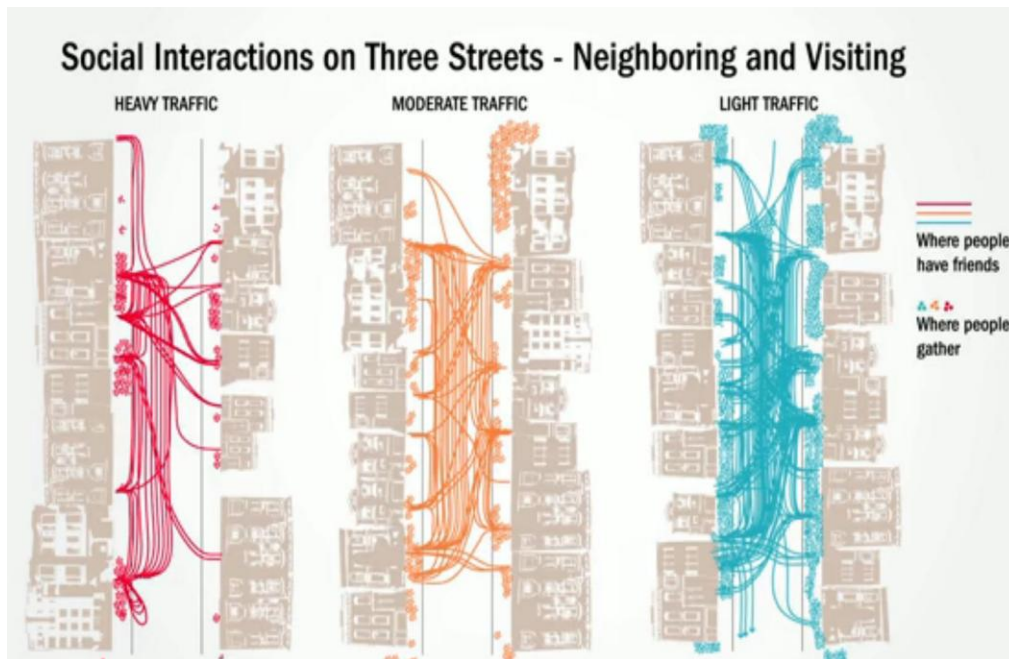
- To gather local knowledge
- To create new/alternative maps
- To educate and communicate with external agencies and decision-makers
- To identify key issues for action planning
- To facilitate decision-making
- To identify data gaps
- To expose complex social/spatial interactions
- To empower local communities

Crowdsourcing

MyAccessible.EU



Citizen Social Science: Livable Streets

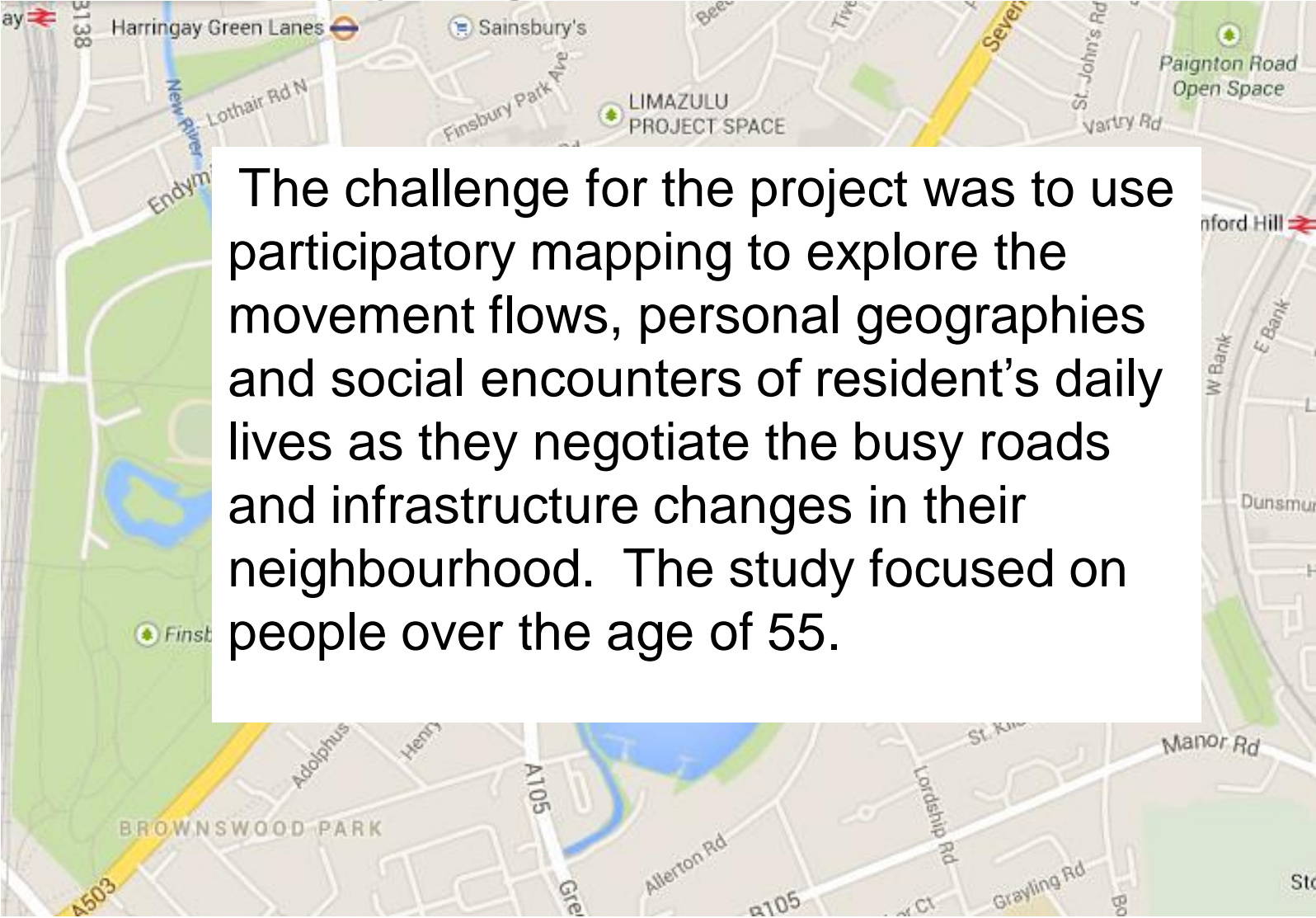


Community Severance occurs where transport infrastructure or the speed or volume of traffic act as a physical or psychological barrier to the movement of people

... people who live in unsafe environments or areas with multiple physical barriers are less likely to go out and therefore more prone to isolation, reduced fitness and increased mobility problems

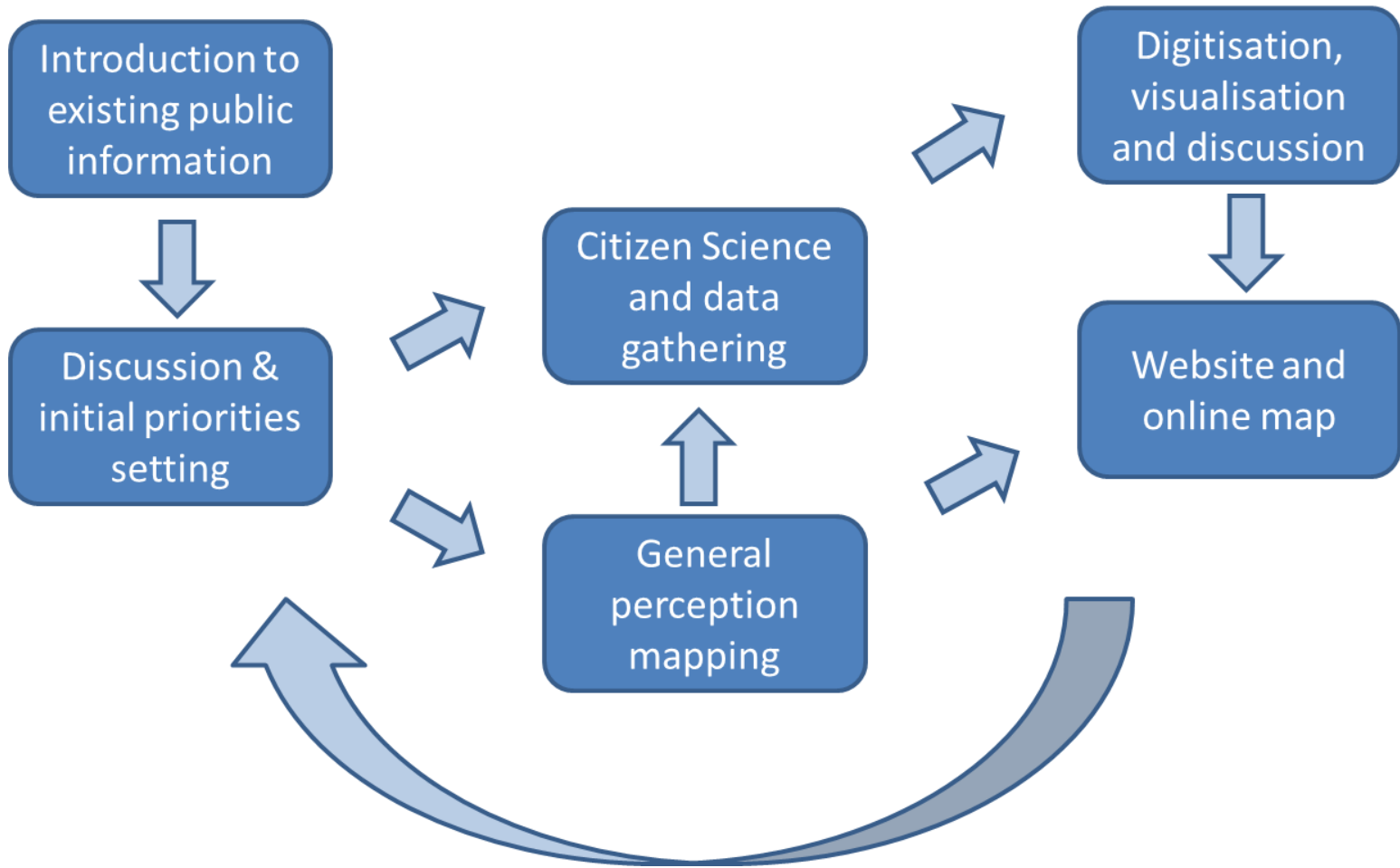
World Health Organisation
(2002) Active Ageing: A
Policy Framework, Geneva:
WHO

Mapping Livable Streets



The challenge for the project was to use participatory mapping to explore the movement flows, personal geographies and social encounters of resident's daily lives as they negotiate the busy roads and infrastructure changes in their neighbourhood. The study focused on people over the age of 55.

Community Engagement Model



Mapping Workshops



We Consulted:

- Residents
- Community groups and development workers
- Housing providers and managers

We went to:

- Lunch Clubs and Coffee Mornings & Community events
- Informal recreational spaces (the pub)

We used:

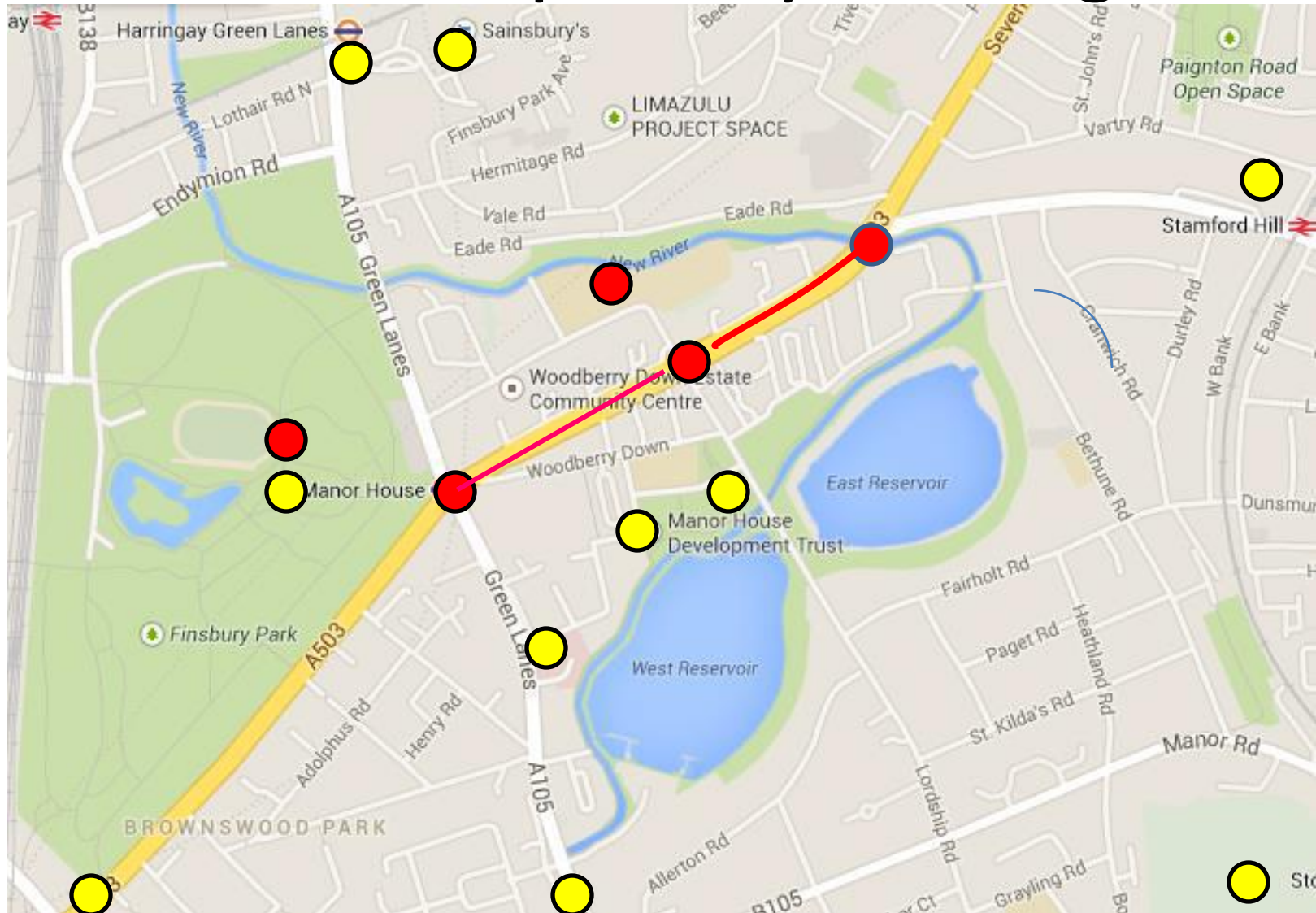
- Social media and the MHDT website to tell people about our events and invite them along



Putting it on the Map



Workshop A Key Findings



Living with Seven Sisters Road



Workshop B: Preferred Routes

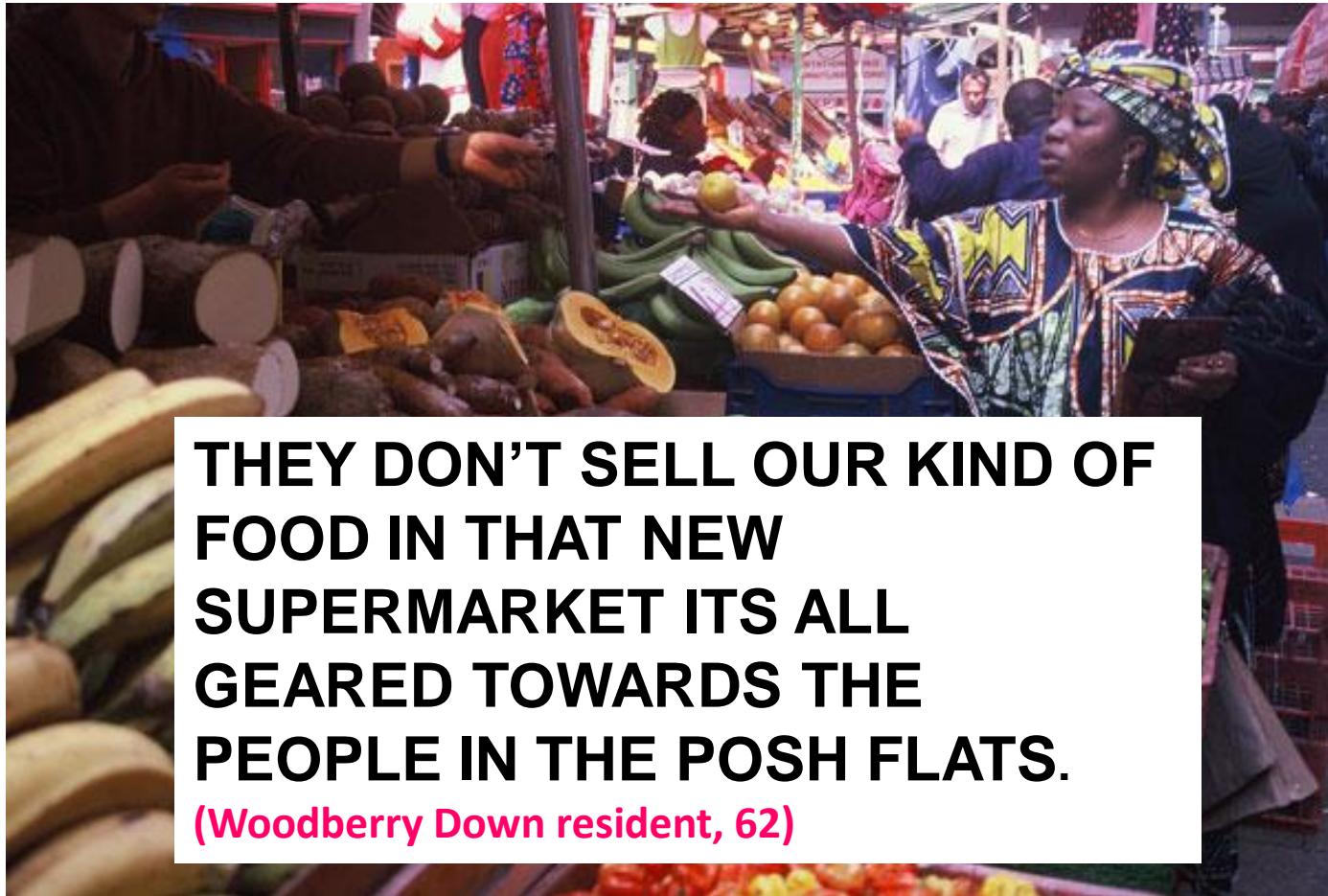
Seven Sisters Road a main conduit for accessing public transport:

People find alternative walking routes

Adopt avoidance strategies - use the bus to avoid dangerous crossings




My Place: African-Caribbean Community



**THEY DON'T SELL OUR KIND OF
FOOD IN THAT NEW
SUPERMARKET ITS ALL
GEARED TOWARDS THE
PEOPLE IN THE POSH FLATS.**

(Woodberry Down resident, 62)

My Place – Latte's and Cupcakes



I WOULD POP INTO THE OLD CAFÉ EVERY MORNING FOR A CUPPA, READ THE PAPER AND HAVE A NATTER – ITS ALL CHANGED NOW – THE NEW ONE IS ALL £5 LATTE'S AND CUP CAKES NONE OF THE OLD CROWD GO THERE Woodberry Down resident (72)

Changing Spaces – My Place @ 50-60



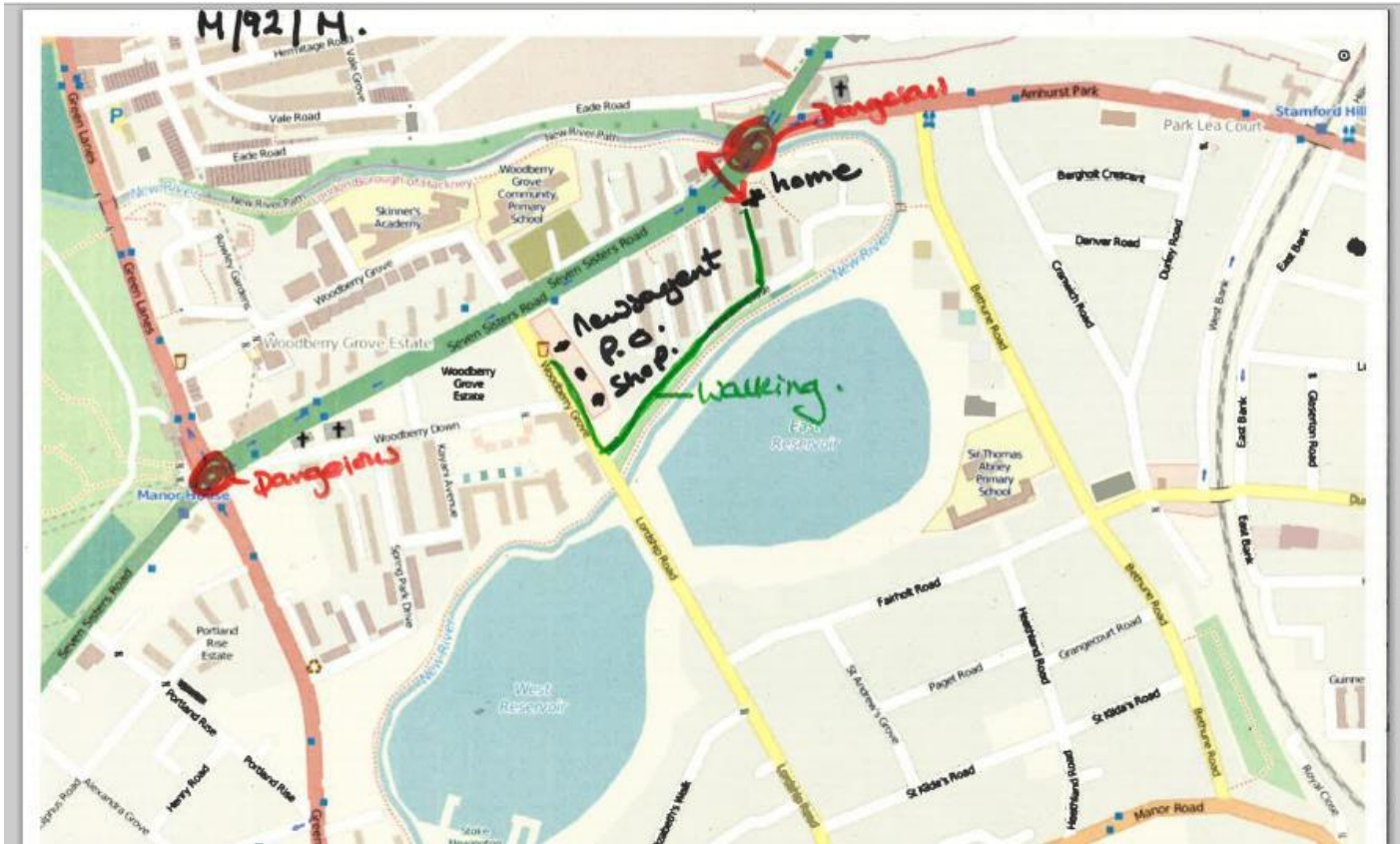
Shrinking worlds linked to deteriorating health and ageing.

Changing Spaces – My Place @ 70



Shrinking worlds linked to deteriorating health and ageing.

Changing Spaces – My Place @ 90



Shrinking worlds linked to deteriorating health and ageing.

Severance & Loneliness



I GET FED UP OF AN EVENING STARING AT THE FOUR WALLS, I END UP TALKING TO THEM LIKE SHIRLEY VALENTINE 'HELLO WALL'...

Woodberry Down Resident (50)

The Digital Map

mapping for change

Community Mapping

Mapping for Change
Accessibility Statement
Login / Register

Mapping for Change Community Maps

Archway - Community Map

Map Legend Search Add Content Edit

On the map
Please use the check boxes to switch data on and off.

- All Layers
- Classes
- Community Facilities
- Community Views
- Conservation Areas
- Events
- Green Areas
- Home improvement and repairs
- Made Home and Independent Shops
- Organisations
- Reuse/Recycle
- Youth Activities

SPONSORS

GO TO MAPPING FOR CHANGE

- Community Maps
- What Are Community Maps?
- Map Tutorial

Map Satellite Hybrid

Google

Organisations

Organisation Name	Active Sixth Centre
Contact Name	Unknown
Contact E-mail	Unknown
Phone Number	0207 281 6760
Category	Health
Address 1	25 Dickenson Road
Postcode	N19 3JT
Web Address	www.activesixthcentre.com/

Private/run classes and workshops ante and postnatal

ed for the Highgate bypass (to join its failed due to repeated collapses across this. The first bridge, collapsed in 1501; the current bridge, built in 1901, is a steel girder bridge.

About This Map

The name derives from the arch built between Highgate and the Great North Road by avoiding the steep Highgate Hill. Instead, a large cutting was recommended by John Rennie constructed in the early nineteenth century, was designed known locally as Suicide Bridge, dates from 1897. The road over the bridge is Hornsey Lane and it connects the villages of Highgate and Crouch End.

Done

The Community Map

Woodberry Down residents now have ownership of the map and data.

They have an evidence base they can use in consultations to improve accessibility in the area

The process of community mapping can be as important as the outcome



Mapping for Change



Community Mapping Platform

[? Find out how to add contributions](#)

1. Draw a shape on the map

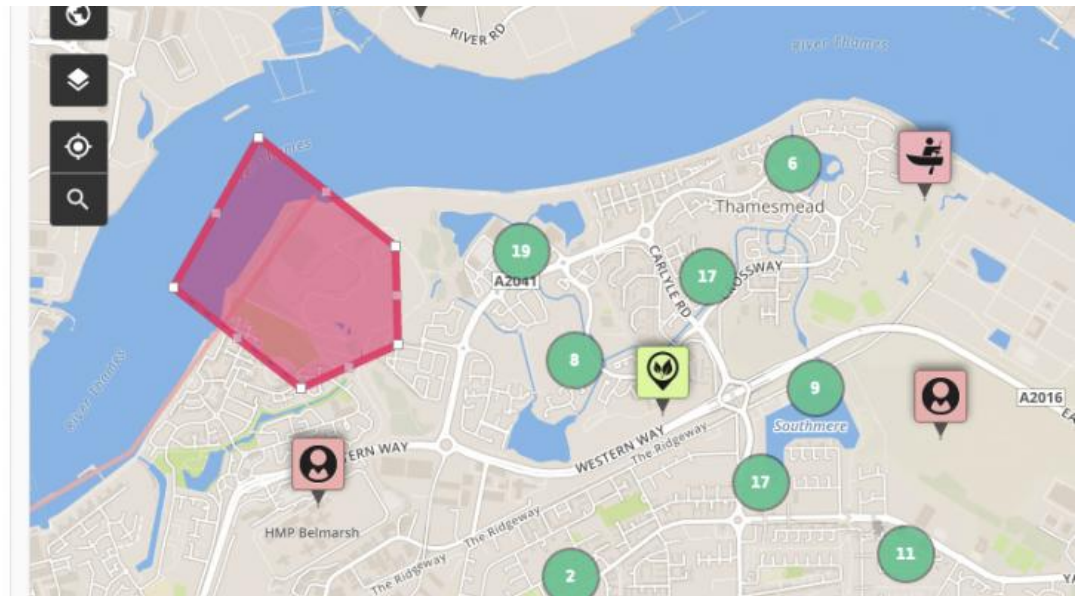


Draw an area by placing points at intervals around it, finish by clicking the first point

Cancel

2. Choose a category

3. Add data to your new contribution





mappingforchange.org.uk
info@mappingforchange.org.uk

www.ucl.ac.uk/street-mobility
myaccessible.eu
wheelmap.org